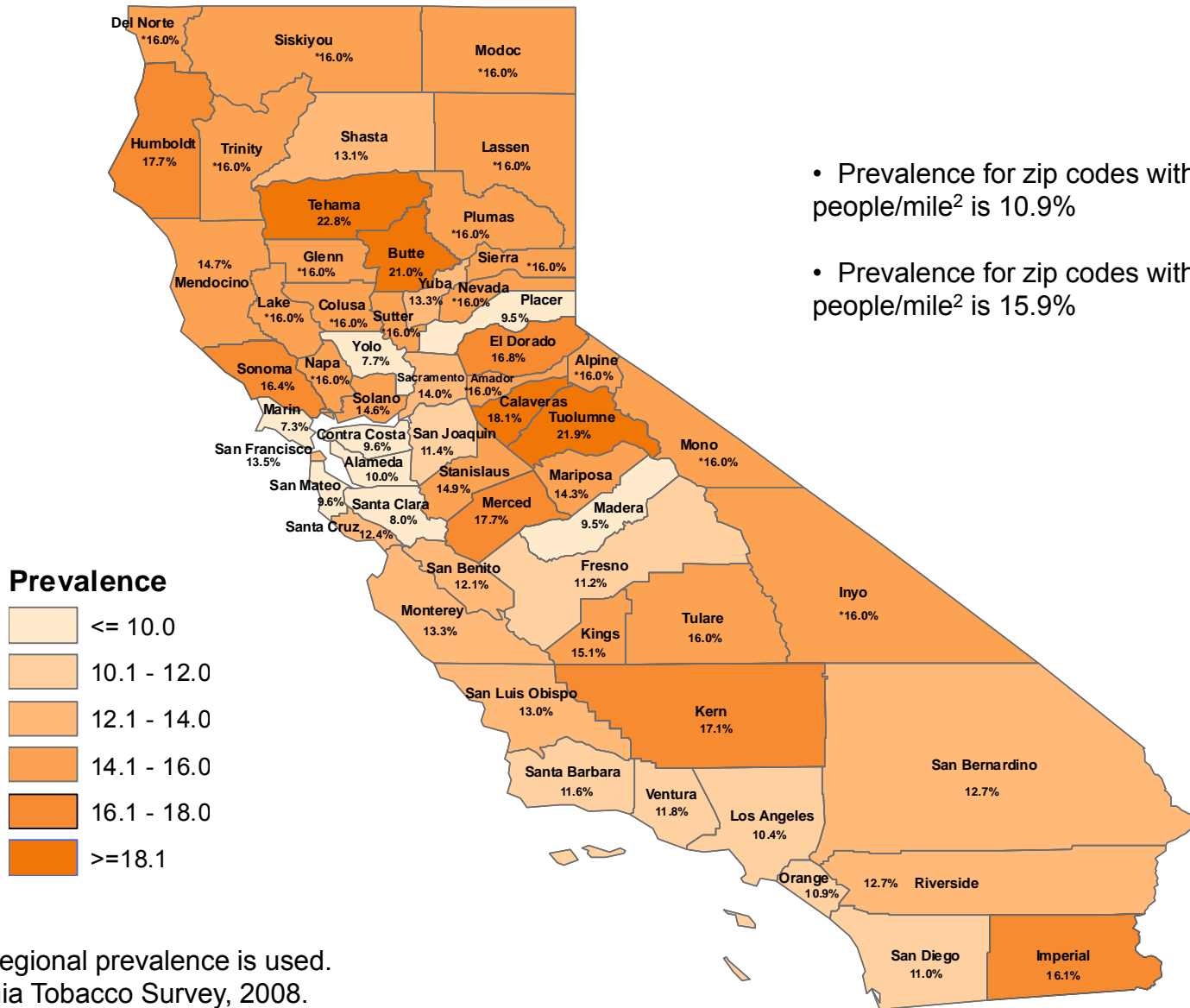
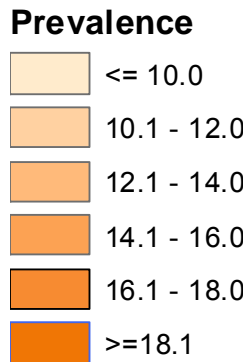




California Adult Smoking Prevalence, 2008



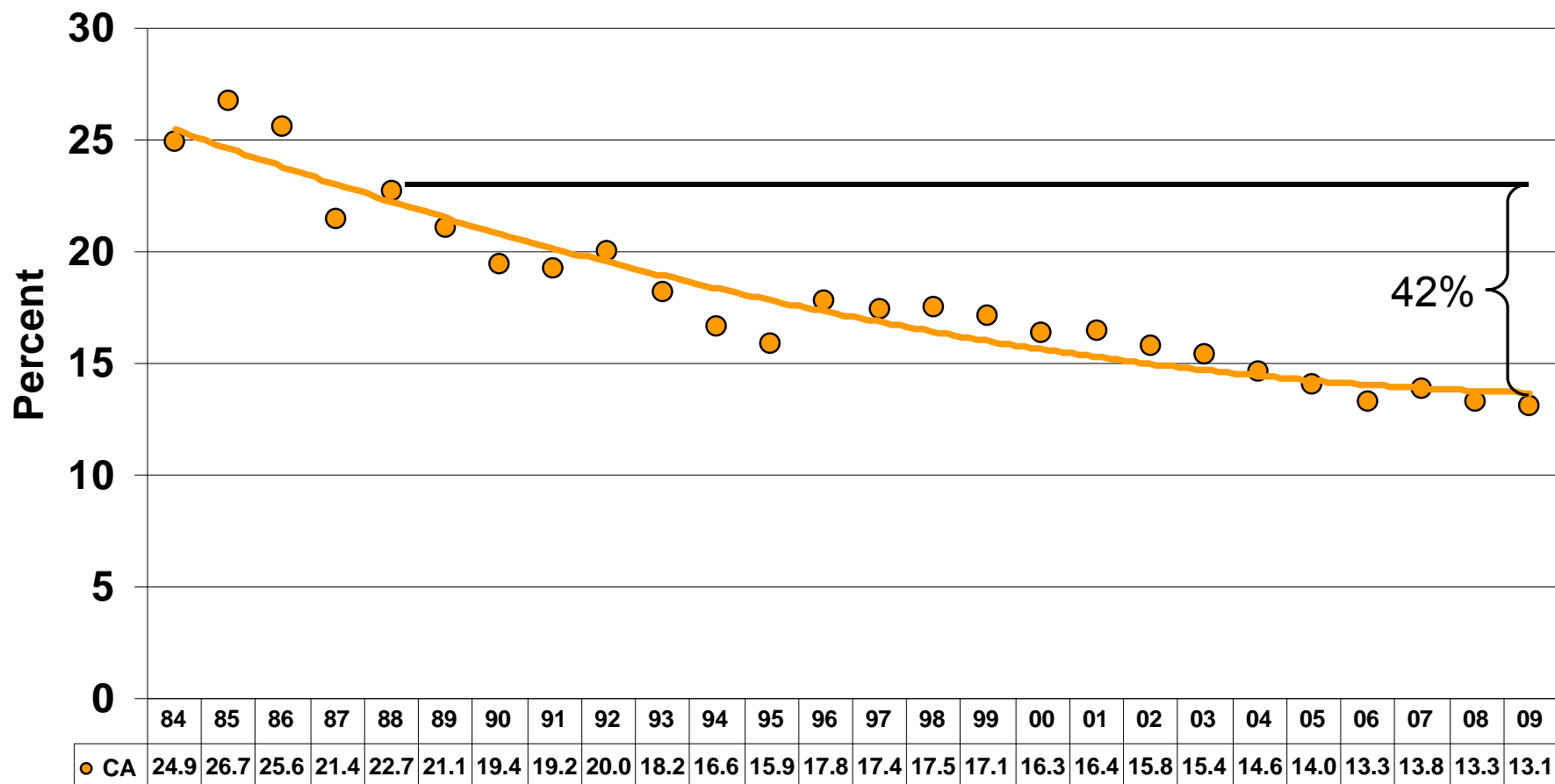
- Prevalence for zip codes with ≥ 2000 people/mile² is 10.9%
- Prevalence for zip codes with < 100 people/mile² is 15.9%



* Means that a regional prevalence is used.
 Source: California Tobacco Survey, 2008.



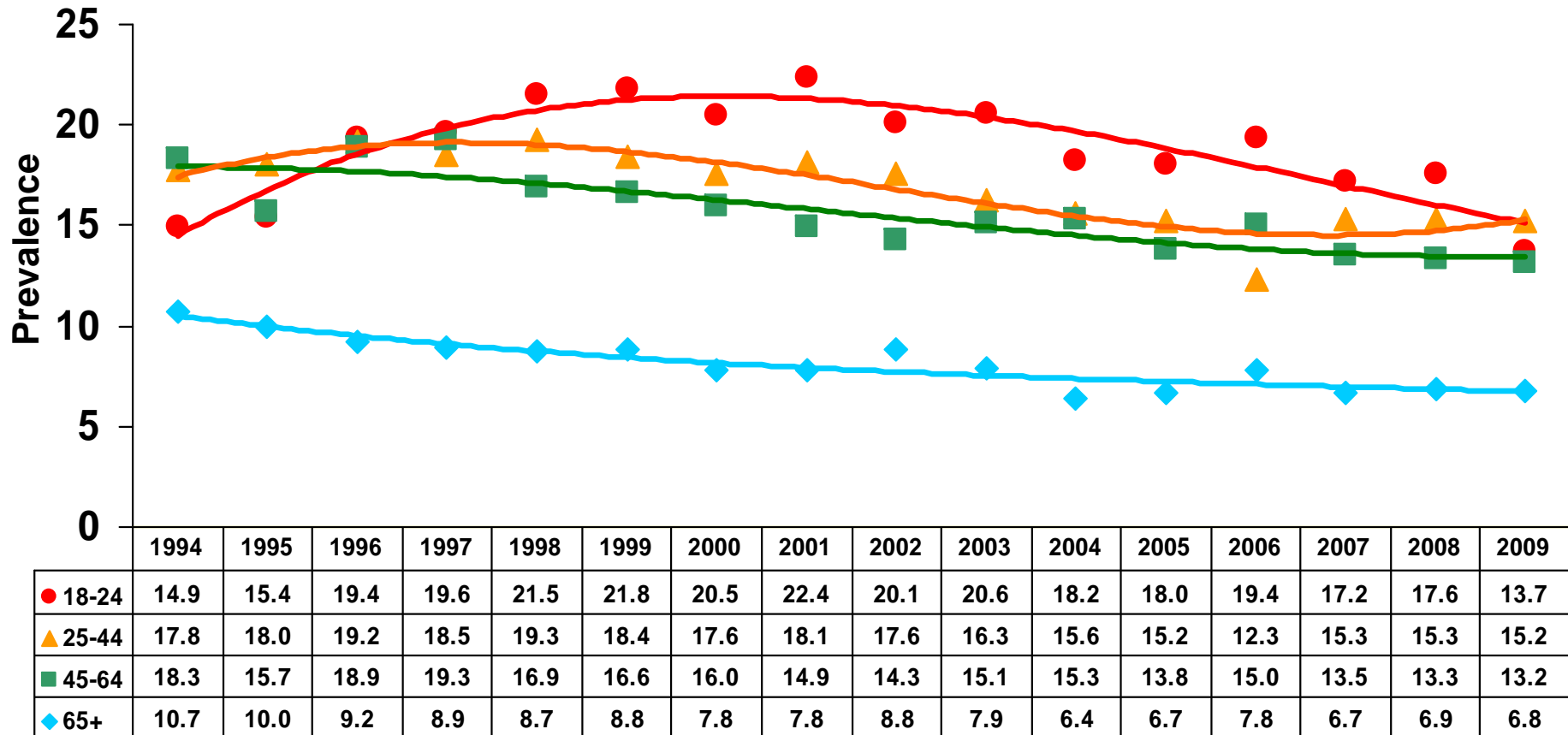
California Adult Smoking Prevalence, 1984-2009



Source: Behavioral Risk Factor Surveillance System (BRFSS) 1984-1992, BRFSS and California Adult Tobacco Survey data is combined for 1993-2009. The data is weighted to the 2000 California population. Note the definition of smoking changed in 1996 to include more occasional smokers. Prepared by: California Department of Public Health, California Tobacco Control Program, March 2010.



Smoking Prevalence Among California Adults by Age Group, 1994-2009



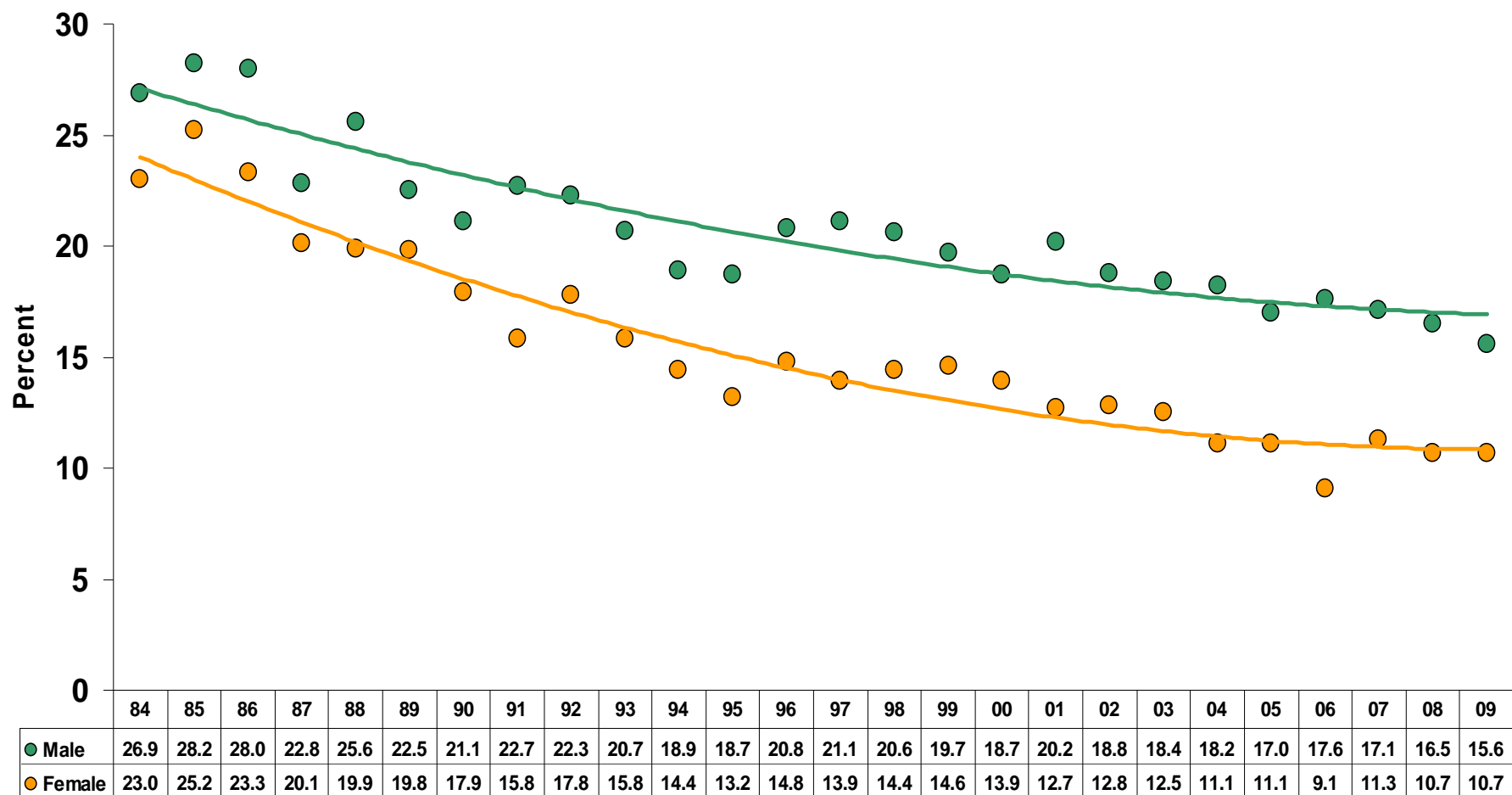
Source: Behavioral Risk Factor Surveillance System (BRFSS) 1984-1992, BRFSS and California Adult Tobacco Survey data is combined for 1993-2009. The data is weighted to the 2000 California population.

Note change of smoking definition in 1996 that included more occasional smokers.

Prepared by: California Department of Public Health, California Tobacco Control Program, March 2010.



Smoking Prevalence Among California Adults by Gender, 1984-2009



Source: Behavioral Risk Factor Surveillance System (BRFSS) 1984-1992, BRFSS and California Adult Tobacco Survey data is combined for 1993-2008. The data is weighted to the 2000 California population.

Note change of smoking definition in 1996 that included more occasional smokers.

Prepared by: California Department of Public Health, California Tobacco Control Program, March 2010.